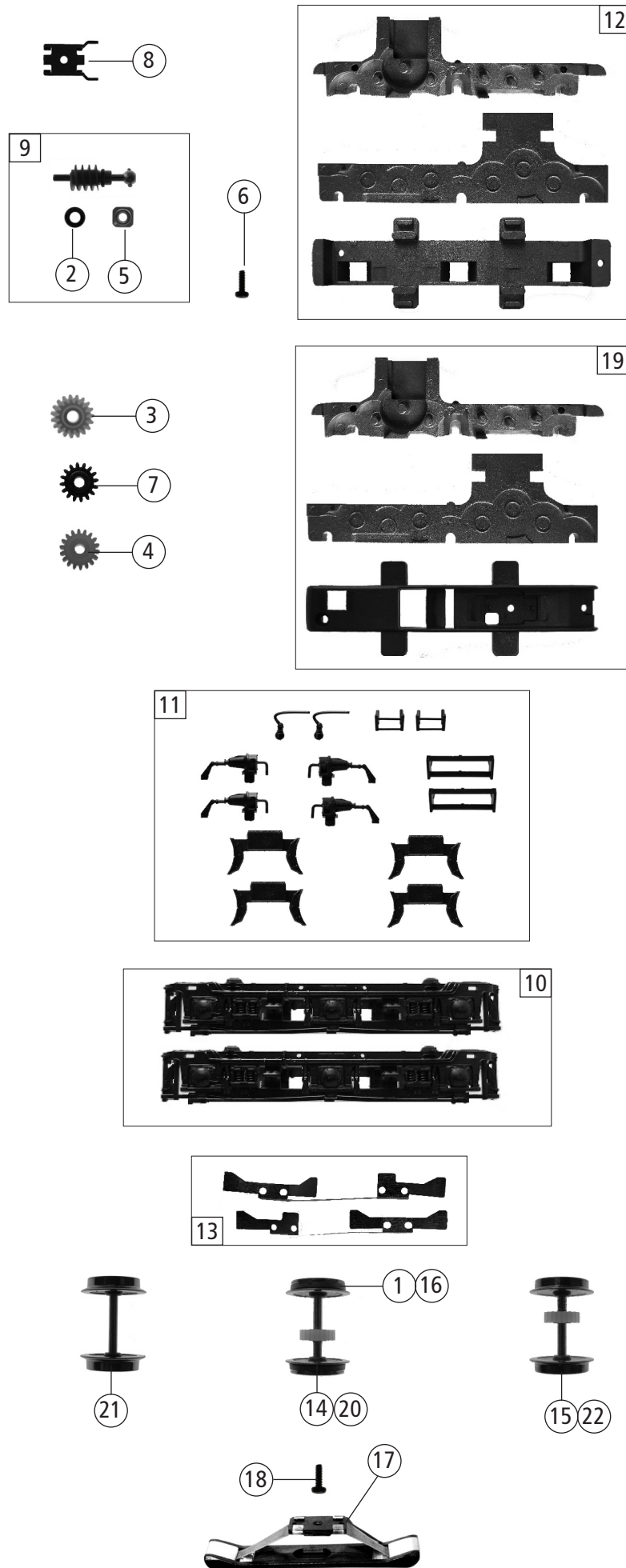
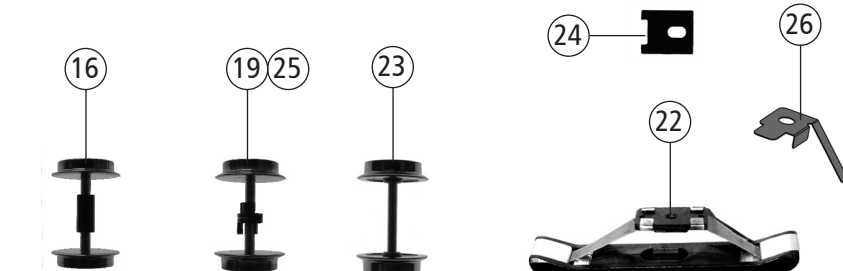
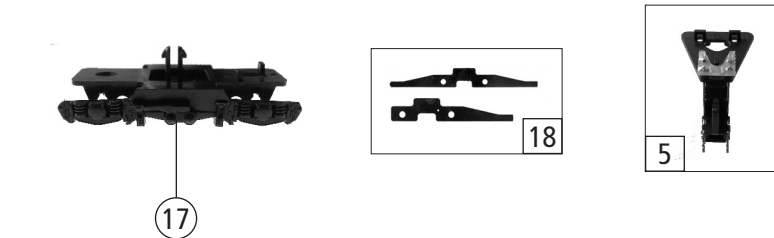
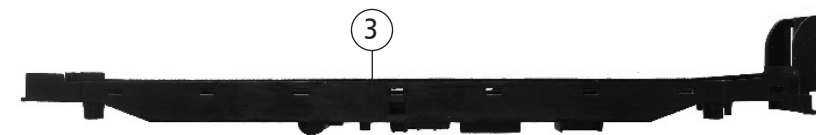
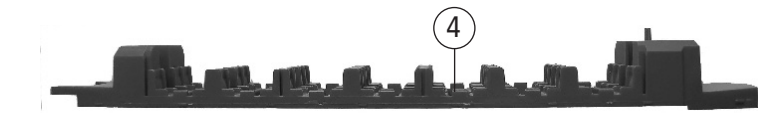
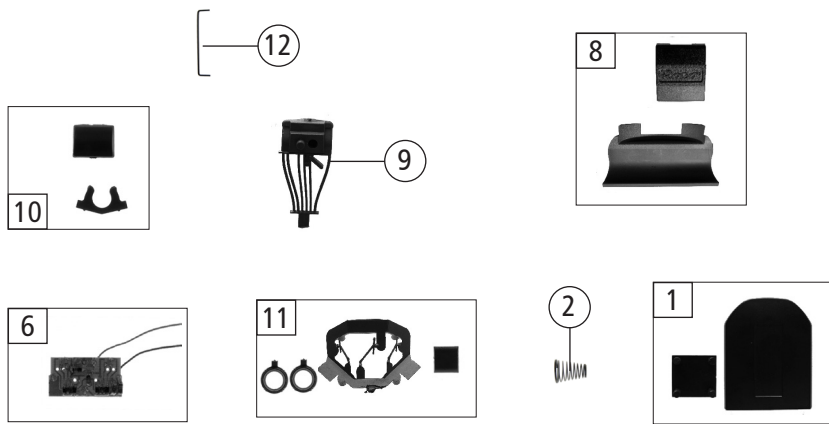
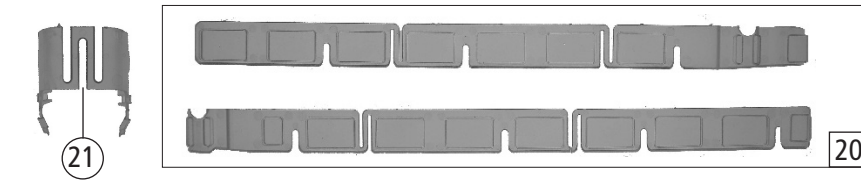
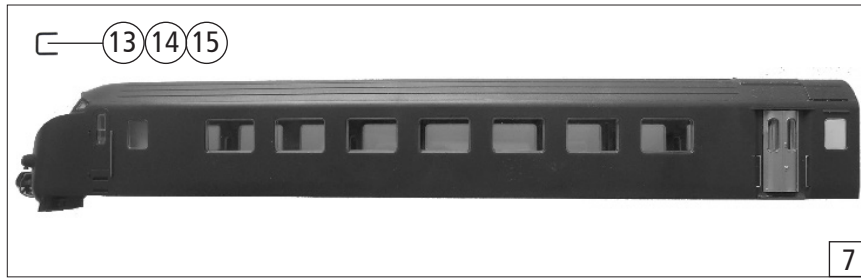


Pos. Nr. Pos.no.	Beschreibung Description	Art.-Nr. Art.no.	Preisgruppe Price bracket
72068	NS TEE	=	
72069		=	🔊
78069		~	🔊
1	Zugfeder Spring	86216	5
2	Kardanschale Cardan bearing	87843	4
3	Motor Motor	112600	28
4	Gehäuse Motorwagen kpl. DE 1001 Body motor coach ass. DE 1001	143268	36
5	Motordistanzplättchen Motor spacer	113690	3
6	GF - Schraube M2x4 GF - screw M2x4	114877	3
7	SK - Schraube M1,6x4 SK - screw M1,6x4	115161	3
8	Motorkontaktfeder Motor contact spring	116812	3
9	Brückenstecker Jumper	125666	9
10	Grundrahmen Base frame	122187	19
11	Bodenteil Bottom part	143269	6
12	Teilesatz kabelhalter Part set cable holder	122189	6
13	Motorplatine Printed circuit ass. for motor	122191	28
14	Kardanwelle kpl. Cardan shaft ass.	122193	9
15	Motorwagendeichsel kpl. Motor coach drawbar	122194	16
16	TS - Fenster Motorwagen Part set window motor coach	122219	8
17	TS - Motorraumfenster Part set engine bay	122220	7
18	Lichtnagelsatz Motorw. u. Steuerw. Part set lens f. motor coach a.cab car	122221	5
19	TS - Führerstand u. Gepäckraum Part set drivers cab a. trunk	122222	8
Sound			
20	Sounddecoder Sound decoder	129800	39
21	Lautsprecher Loudspeaker	129524	14
22	TS - Schallkörper Part set - Sound body	130289	6

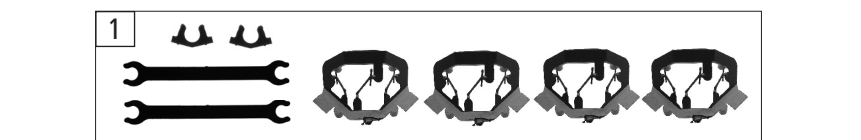
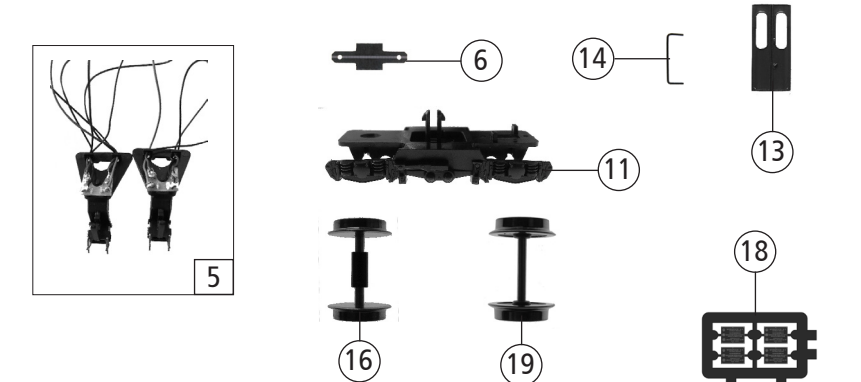
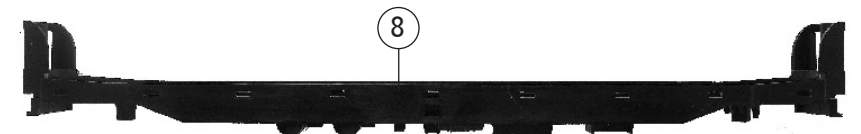
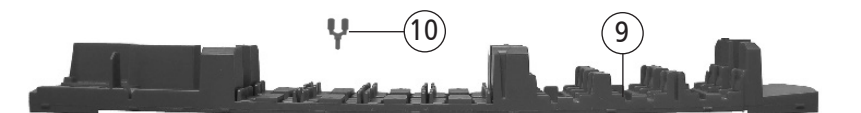
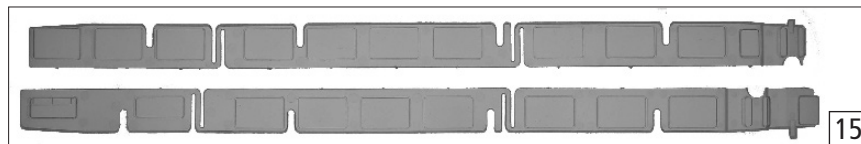
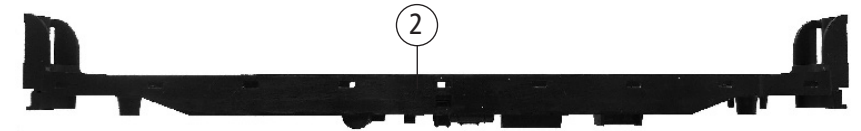
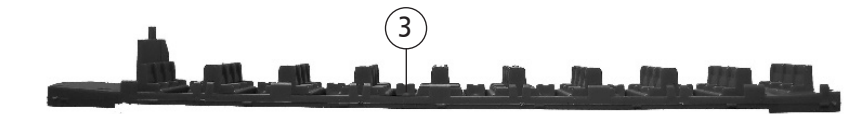
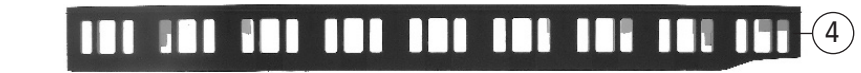
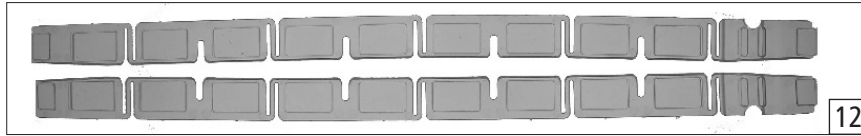
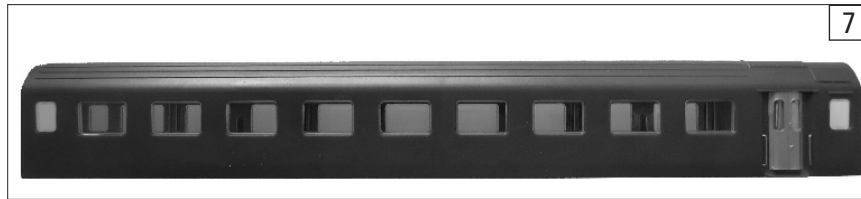
Änderungen in Konstruktion und Ausführung vorbehalten
We reserve the right to change the construction and specification



72068		NS	TEE	=	
72069				=	🔊
78069				~	🔊
Pos. Nr. Pos.no.	Beschreibung Description	Art.-Nr. Art.no.	Preisgruppe Price bracket		
1	Hafringsatz 10Stk. 10,3-12,8mm Set with traction tires 10 pieces	40069	---		
2	Beilagscheibe Washer	86108	3		
3	Schneckenrad doppelt Wormgear double	86413	5		
4	Zahnrad Z=18 gerade M=0.4 Gear Z=18 M=0.4	86460	3		
5	Lager für Schneckenachse Bearing for worm axle	89749	6		
6	GF - Schraube M1,6x5 GF - screw M1,6x5	115269	3		
7	Zahnrad Z=16 Gear Z=16	117617	3		
8	Schneckendeckel Worm cover	122196	5		
9	Schneckensatz Worm set	123255	13		
10	Blendensatz Motorwagen Bogie set motor coach	122213	12		
11	TS - Drehgestellblende Motorwagen Part set bogie for motor coach	122214	8		
12	TS - Getriebe Part set gear	122215	14		
13	Radkontaktsatz Motorwagen Wheel contact set for motor coach	122216	10		
14	Radsatz 1 u. 6 m. Haftr. m. Zahn. Wheelset 1 u. 6 w. traction tyre w. gear	122217	12		
15	Radsatz 2,3,4,5 o. Haftr. m. Zahnrad Wheelset 2-5 without tract.t., w. gear	122218	11		
AC-Wechselstrom					
16	Hafringsatz 10Stk. 10,3-12,4mm Set w. traction tiers 10 pieces	40074	---		
17	Schleifer Collector	86031	14		
18	GF - Schraube M1,6x5 GF - screw M1,6x5	115269	3		
19	TS - Getriebe AC Part set gear AC	122241	14		
20	Radsatz 1 u. 6 m. Haftr. m. Zahn. Wheelset 1 u. 6 w. traction tyre w. gear	122242	12		
21	Radsatz 2u.3 o. Haftr. o. Zahnrad Wheelset 2,3 without tr.t., without gear	122243	10		
22	Radsatz 4u.5 o. Haftr. m. Zahnrad Wheelset 4a.5 without tract. t., w. gear	122244	11		



Pos. Nr. Pos.no.	Beschreibung Description	Art.-Nr. Art.no.	Preisgruppe Price bracket
72068	NS TEE	=	
72069		=	🔊
78069		~	🔊
1	Faltenbalgsatz für alle Wägen Part set boot for all cars	122190	8
2	Schwenkbalgfeder Spring for boot	122204	4
3	Bodenplatte Steuerwagen Base plate cab car	122208	9
4	Inneneinrichtung Steuerwagen Interior cab car	143267	8
5	Steuerwagendeichsel kpl. Drawbar ass. for cab car	122210	15
6	Lichtplatine kpl. f. Steuerwagen Printed circuit for light ass. f. cab car	122211	18
7	Gehäuse kpl. Steuerwagen Body ass. cab car	143266	36
8	TS - Radraumabdeckung Drehgestell. Part set cover	122223	6
9	Kupplung Motorwagen u. Steuerwagen Coupling motor coach a. cab car	122224	5
10	TS - Kupplungsabd. u. Blindabd. Part set Coupling cover a. blind cover	122225	6
11	TS - Gehäuse Motorw. Steuerv. Part set body motor coach a. cab car	122226	6
12	Türgriff lackiert Motorw. Steuerv. Handle coated motor coach a. cab car	122227	6
13	Frontgriff oben lackiert Handle above coated	122228	6
14	Frontgriff Mitte lackiert Handle middle coated	122229	6
15	Frontgriff unten lackiert Handle down coated	122230	6
16	Radsatz DC1 Steuerwagen Wheelset DC1 cab car	122231	9
17	Blende 2-achsig Steuerwagen Bogie axial cab car	122232	8
18	Radkontaktsatz Steuerwagen Wheel contact set cab car	122237	6
19	Radsatz DC2 Steuerwagen Wheelset DC2 cab car	122238	10
20	TS - Fenster Steuerwagen Part set window cab car	122389	10
21	Führerstandfenster Steuerwagen Window cab car	122240	6
AC-Wechselstrom			
22	Schleifer Collector	86031	---
23	Radsatz Wheelset	122245	8
24	Schleiferhalter Slider holder	122246	4
25	Radsatz AC Wheelset AC	122247	9
26	Schleifkontakt Slider contact	129809	4



Pos. Nr. Pos.no.	Beschreibung Description	Art.-Nr. Art.no.	Preisgruppe Price bracket
72068	NS TEE	==	
72069		==	🔊
78069		~	🔊
1	Zurüstbeutel Bag with accessories	122186	10
2	Bodenplatte Abteilwagen Base plate compartment coach	122198	8
3	Inneinrichtung Abteilwagen Interior compartment coach	122199	9
4	Korridorfront Abteilwagen Korridorfront compartment coach	122200	8
5	Waggondeichsel komplett Drawbar ass. for railway car	122201	18
6	Kupplungsplatine für Waggons Printed circuit for coupling	122202	9
7	Gehäuse kpl. Abteilwagen Body ass. Compartment coach	143265	29
8	Bodenplatte Speisewagen Base plate dining car	122205	9
9	Inneneinrichtung Speisewagen Interior dining car	143264	14
10	Tischlampe Table lamp	122207	3
11	Blende 2-achsig Steuerwagen Bogie axial cab car	122232	8
12	TS - Fenster Abteilwagen Part set window compartment coach	122386	10
13	Wagentür alle Waggons u. Steuerwagen Car door for cab car a. all wagons	122234	6
14	Griffstange lackiert für Waggons Hand rail coated for all wagons	122235	5
15	TS - Fenster Speisewagen Part set window dining car	122387	10
16	Radsatz DC Wheelset DC	122231	9
17	Gehäuse kpl. Speisewagen Body ass. dining car	143262	29
18	Tafelsatz Set of panels	143270	12
AC-Wechselstrom			
19	Radsatz Wheelset	122245	10

Ersatzteile erhalten Sie bei Ihrem Fachhändler, oder Ihrer Landesvertretung.
You can order your Replacement Parts at your local dealer, your country representative.